

# Oodnadatta Aboriginal School Annual Report 2015



## Context

**Org Unit No:** 0324

**Principal:**

Mr Aaron Holder

**School Name:** Oodnadatta Aboriginal School

Oodnadatta Aboriginal School is located 1200km from Adelaide on the edge of the Simpson Desert. We are a predominantly Aboriginal community. We have an enrolment of approximately 33 (increased from 22 over the last 5 years). The majority of our students are Indigenous (except 1).

Our disadvantage rating is 1.

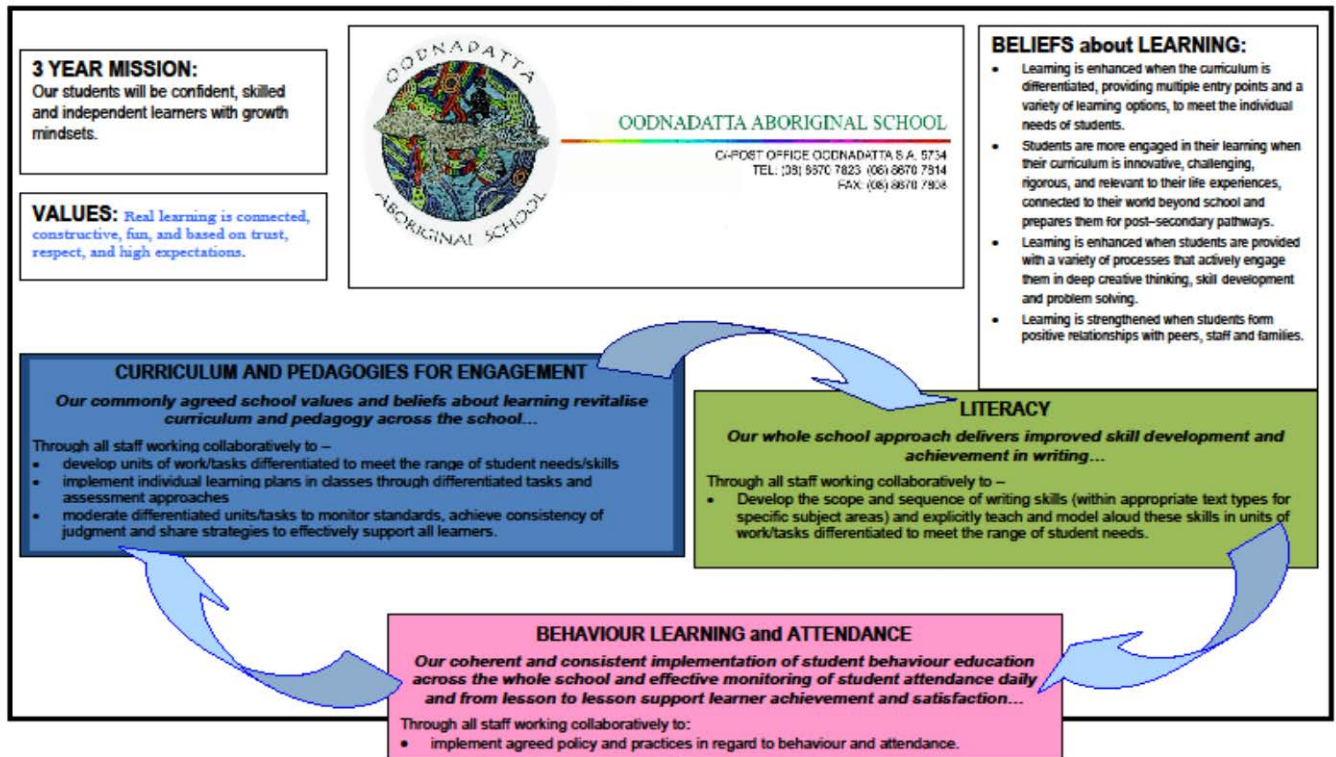
Our vision statement:

Education and learning are the keys to the future. Learning is a lifelong process and the skills needed to learn are the foundations of a successful life. The Oodnadatta Aboriginal School is an exciting stimulating environment for students, staff, and community to engage with the curriculum. Students at Oodnadatta are self-directed learners who are engaged in their learning process. **The learning community at Oodnadatta is owned by all**

participants within the school and the community, and all participants are leaders in the learning process. Real learning is connected, constructive, fun, and based on trust, respect, and high expectations.

Site Improvement Planning

Oodnadatta Aboriginal School  
Site Improvement Plan



<b>Priorities:</b>	<b>Targets:</b>	<b>Strategies:</b>	<b>Evaluation Measures:</b>
The two or three key areas for specific focus over the next 12 months, as determined from analysis of learner data and Self Review processes	Agreed, specific targets that clearly indicate what improved outcomes learners will achieve or demonstrate	The major actions that staff – teachers, SSOs, leaders – commit to do so that learners are supported at classroom level to achieve the Targets	The data, evidence, processes and timelines to be used to monitor / measure / evaluate progress towards achievement of the Targets and/or effectiveness of Strategies
<b>Focus on Learning</b>	Build on the whole school literacy and numeracy agreements to include agreements about effective learning	Whole staff process to develop next stage of literacy and numeracy plans. Plans to identify and enact clear intervention processes.	Literacy and numeracy plans revised to include: <ul style="list-style-type: none"> <li>at least 2 strategies for improving intellectual</li> </ul>

	<p>environments and effective, high yield practices.</p> <p>Revise whole school numeracy plan to incorporate the recommendations of the R+ Expectations</p> <p>Increase attendance by 3% across the school</p>	<p>Implement attendance strategies:</p> <ul style="list-style-type: none"> <li>- classroom based rewards strategies</li> <li>- experiential learning opportunities based on attendance community publicised.</li> </ul>	<p>stretch</p> <ul style="list-style-type: none"> <li>- means for evaluating effectiveness.</li> </ul> <p>Numeracy and literacy plans updated to include revised agreed data collection tools.</p> <p>Attendance increases by 3% by 2016.</p>
<b>Attend to culture</b>	<p>Deprivatisation of practice. Staff development works to fulfil school mission.</p>	<p>Teaching staff to incorporate programme presentation and peer observations. PDPs linked to Teacher standards. SSO PDPs linked to school mission.</p>	<p>PDP exists for each staff member.</p>

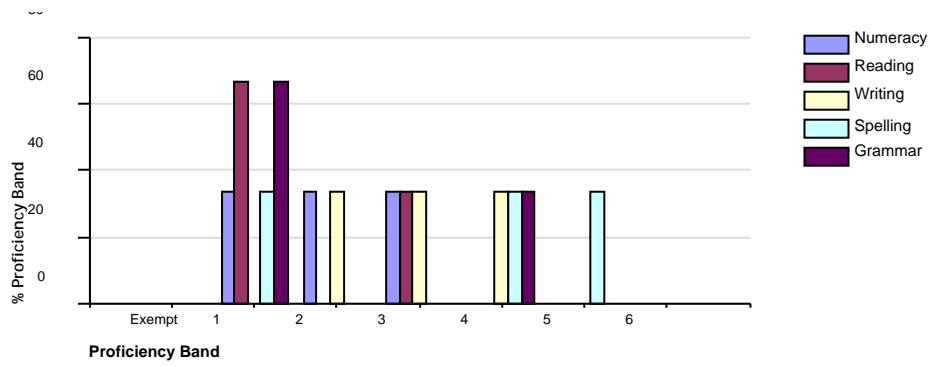
### Student Achievement

Students continued to achieve well at Oodnadatta Aboriginal School. Students who need to catch up due to absence periods due to travel, or are in need of extension, for example are supported through our literacy programs of leveled readers and one-on-one support. Quicksmart and one-on-one support offer the same catch up and extension opportunities for students in numeracy. Teachers keep individual learning plans to ensure we understand individual student needs and how will they be addressed. Teachers are using the school data base to plot and track student achievement. We were lucky in 2015 to have had Volunteering Australia working with us for an entire term. During this time, they listened to individual students read to them every day, thereby ensuring students were able to read to an adult and discuss what they had read. Data tracking during this time showed that this was a very effective literacy strategy, and we have maintained the reading program using local staff and community members.

### NAPLAN

#### Student Proficiency Bands

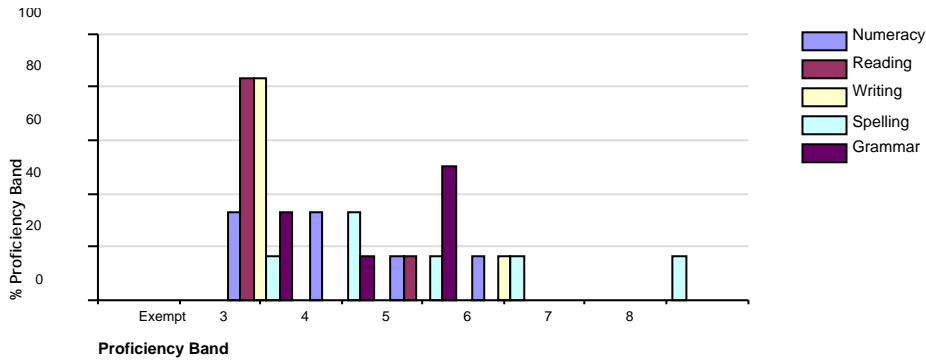
Figure 1: Year 3 Proficiency Bands by Aspect



**Table 1: Year 3 Proficiency Bands by Aspect**

% Proficiency Band by Test Aspect	Year 3						
	Exempt	1	2	3	4	5	6
Numeracy		33.3	33.3	33.3			
Reading		66.7		33.3			
Writing			33.3	33.3	33.3		
Spelling		33.3			33.3	33.3	
Grammar		66.7			33.3		

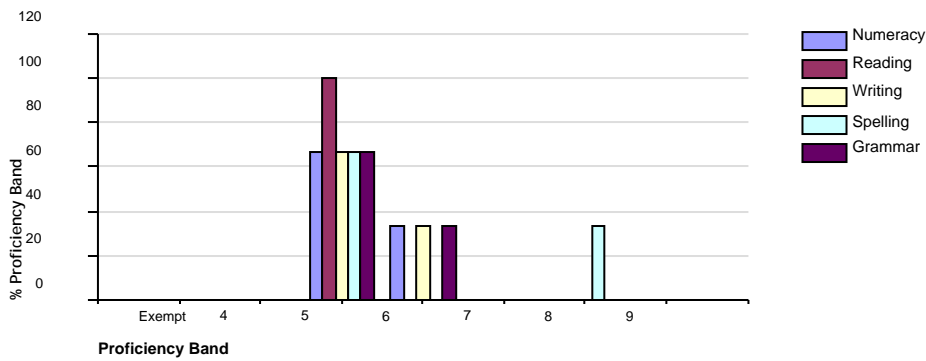
**Figure 2: Year 5 Proficiency Bands by Aspect**



**Table 2: Year 5 Proficiency Bands by Aspect**

% Proficiency Band by Test Aspect	Year 5						
	Exempt	3	4	5	6	7	8
Numeracy		33.3	33.3	16.7	16.7		
Reading		83.3		16.7			
Writing		83.3			16.7		
Spelling		16.7	33.3	16.7	16.7		16.7
Grammar		33.3	16.7	50.0			

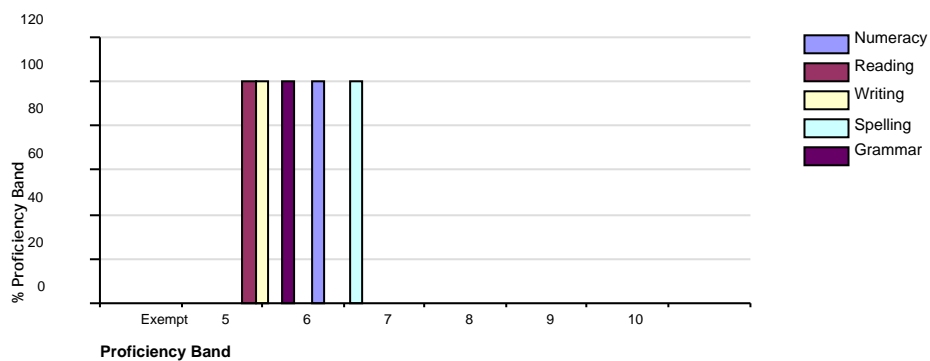
**Figure 3: Year 7 Proficiency Bands by Aspect**



**Table 3: Year 7 Proficiency Bands by Aspect**

% Proficiency Band by Test Aspect	Year 7						
	Exempt	4	5	6	7	8	9
Numeracy			66.7	33.3			
Reading			100.0				
Writing			66.7	33.3			
Spelling			66.7			33.3	
Grammar			66.7	33.3			

**Figure 4: Year 9 Proficiency Bands by Aspect**



**Table 4: Year 9 Proficiency Bands by Aspect**

% Proficiency Band by Test Aspect	Year 9						
	Exempt	5	6	7	8	9	10
Numeracy			100.0				
Reading		100.0					
Writing		100.0					
Spelling			100.0				
Grammar		100.0					

## Student Mean Scores

Figure 5: Year 3 Mean Scores

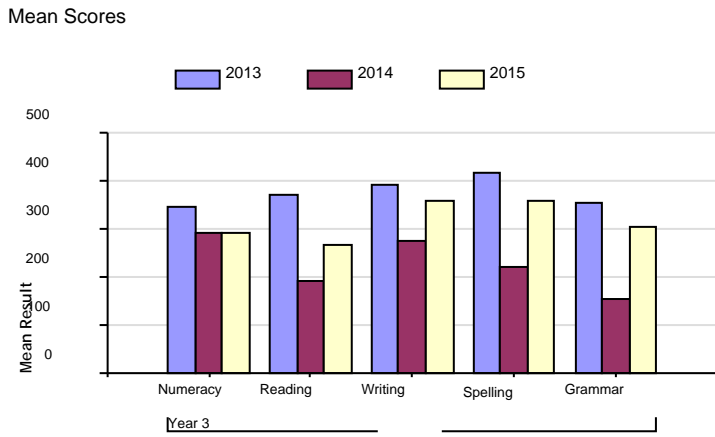
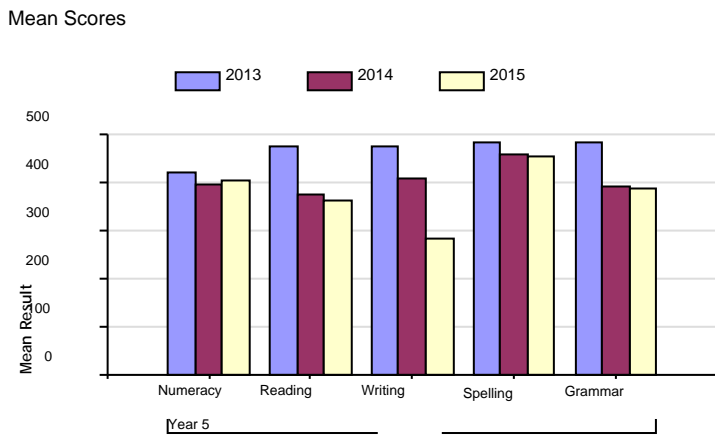


Table 5: Year 3 Mean Scores

Mean Scores by Test Aspect	Year 3		
	2013	2014	2015
Numeracy	346.8	291.2	292.5
Reading	373.1	190.0	266.4
Writing	393.0	275.9	358.3
Spelling	415.2	222.0	357.0
Grammar	355.5	153.9	302.2

Figure 6: Year 5 Mean Scores

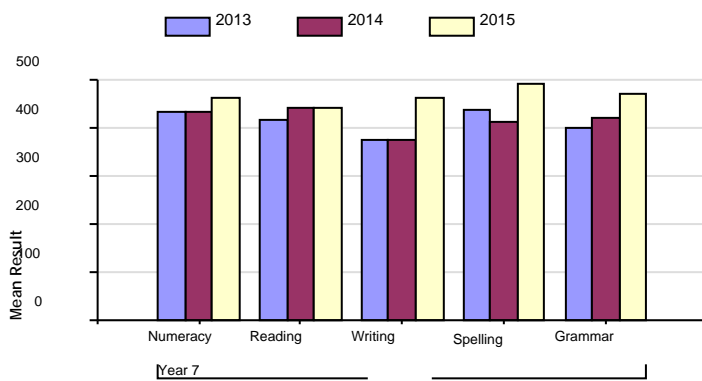


**Table 6: Year 5 Mean Scores**

Mean Scores by Test Aspect	Year 5		
	2013	2014	2015
Numeracy	421.9	395.8	403.0
Reading	477.3	376.9	362.4
Writing	474.8	408.0	284.5
Spelling	485.9	460.2	452.9
Grammar	485.7	390.3	388.5

**Figure 7: Year 7 Mean Scores**

Mean Scores



**Table 7: Year 7 Mean Scores**

Mean Scores by Test Aspect	Year 7		
	2013	2014	2015
Numeracy	434.3	432.8	465.0
Reading	416.5	441.2	441.7
Writing	376.5	373.3	464.9
Spelling	438.8	413.5	493.0
Grammar	401.3	419.8	469.6

**Figure 8: Year 9 Mean Scores**



Mean Scores

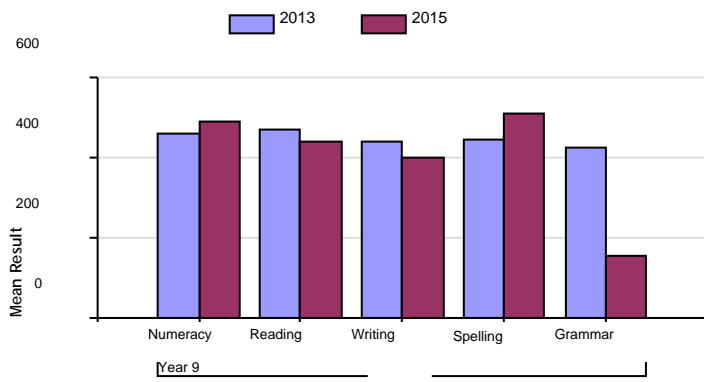


Table 8: Year 9 Mean Scores

Mean Scores by Test Aspect	Year 9	
	2013	2015
Numeracy	460.5	492.7
Reading	472.0	440.5
Writing	437.8	402.0
Spelling	447.5	511.7
Grammar	424.3	155.0

## Growth

Figure 9: Year 3-5 Growth

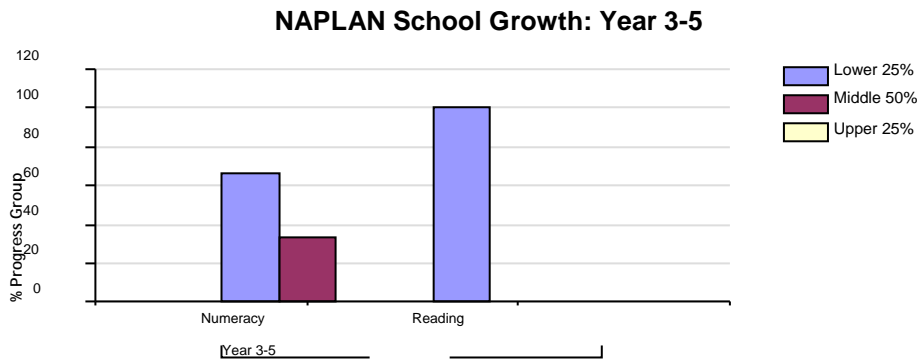


Table 9: Year 3-5 Growth

Growth by Test Aspect	Year 3-5	
	Progress Group	Site
Numeracy	Lower 25%	66.7
	Middle 50%	33.3
	Upper 25%	
Reading	Lower 25%	100.0
	Middle 50%	
	Upper 25%	

Figure 10: Year 5-7 Growth

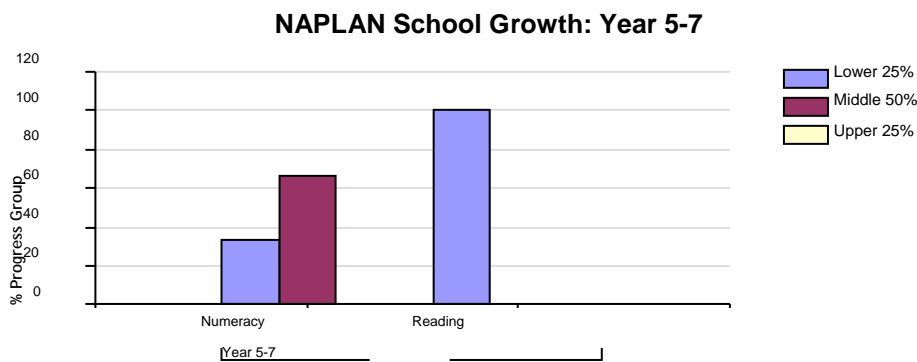


Table 10: Year 5-7 Growth

Growth by Test Aspect	Year 5-7	
	Progress Group	Site
Numeracy	Lower 25%	33.3
	Middle 50%	66.7
	Upper 25%	
Reading	Lower 25%	100.0
	Middle 50%	
	Upper 25%	

Figure 11: Year 7-9 Growth

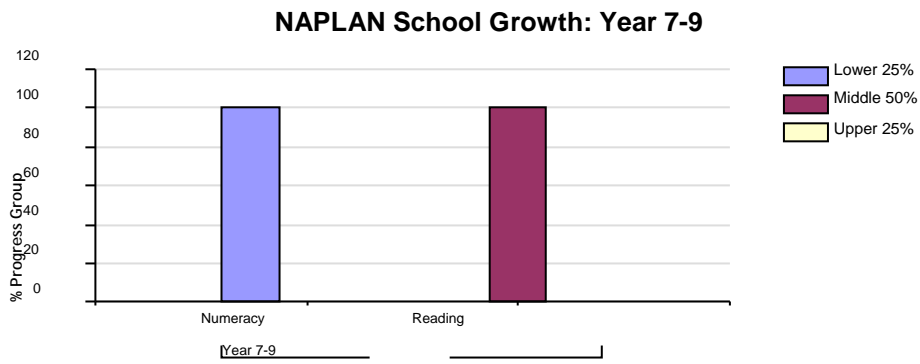


Table 11: Year 7-9 Growth

Growth by Test Aspect	Year 7-9	
	Progress Group	Site
Numeracy	Lower 25%	100.0
	Middle 50%	
	Upper 25%	
Reading	Lower 25%	
	Middle 50%	100.0
	Upper 25%	

## Student Data

### Attendance

Figure 12: Attendance by Year Level

#### National Attendance Rates Semester 1

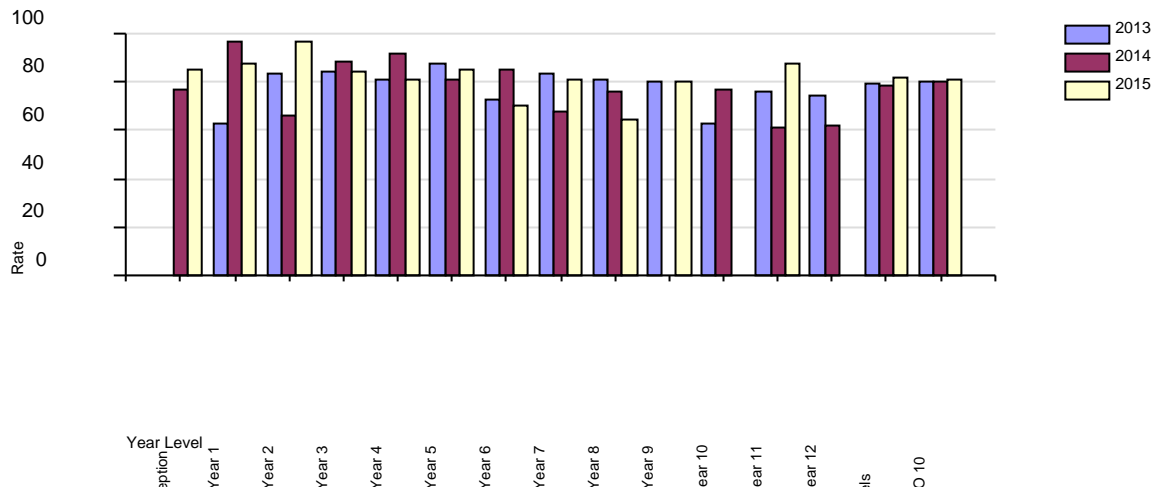


Table 12: Attendance by Year Level

Attendance by Year Level	% Attendance		
	2013	2014	2015
Reception		76.9	84.8
Year 1	62.7	96.8	87.5
Year 2	83.7	66.4	96.5
Year 3	84.2	88.4	84.1
Year 4	80.6	92.1	81.3
Year 5	87.2	81.3	85.0
Year 6	72.9	85.0	70.5
Year 7	83.6	67.6	80.8
Year 8	81.2	76.3	64.7
Year 9	80.4		80.2
Year 10	62.5	76.6	
Year 11	75.7	61.3	87.4
Year 12	74.5	62.0	
Total All Year Levels	79.4	78.8	82.1
Total ACARA 1 TO 10	79.9	80.3	81.0

**Table 13: Intended Destination**

Leave Reason	2014			
	School		Index	DECD
	No	%	%	%
Employment			1.9%	2.9%
Interstate/Overseas	3	21.4%	9.8%	9.5%
Other			4.2%	1.4%
Seeking Employment			2.9%	3.8%
Tertiary/TAFE/Training			1.9%	3.6%
Transfer to Non-Govt Schl			5.2%	9.8%
Transfer to SA Govt Schl	11	78.6%	59.4%	48.8%
Unknown			14.7%	20.3%
Unknown (TG - Not Found)				0.0%

## Staff

### Teacher Qualifications

All teachers at this school are qualified and registered with the SA Teachers Registration Board.

Qualification Level	Number of Qualifications
Graduate Degrees or Diplomas	11
Post Graduate Qualifications	6

Please note: Staff that have more than 1 qualification will be counted more than once in the above qualification table. Therefore the total number of staff by qualification type may be more than the total number of teaching staff.

### Workforce Composition including Indigenous staff

Workforce Composition	Teaching Staff		Non-Teaching Staff	
	Indigenous	Non Indigenous	Indigenous	Non Indigenous
Full-time Equivalents	0	6.20	3.80	0.99
Persons	0	7	4	1

Profit & Loss Statement included at APPENDIX A

# Oodnadatta Aboriginal School

## *Profit & Loss Statement 2012*

### Revenue

#### **GRANTS : DETE**

AEDC RESERCH FUNDING	\$281.88
ELECTRICAL TEST GRANT 2008	\$100.00
GRANTS WHOLE SCHOOL -GLOBAL BUDGET	1,482,725.97
<b>Total for GRANTS : DETE</b>	<b>\$1,483,107.85</b>

#### **GLOBAL BUDGET REVENUE**

PRIMARY AUST CURRICULUM STRATEGY	\$2,730.00
GB-TCH SUPPLEMENTATION	\$23,705.11
GB-SSO SUPPLEMENTATION	\$12,392.38
GB-MISC SUPPLEMENTATION	\$8,718.28
BETTER SCHOOLS AGREEMENT FUNDING	\$38,576.41
<b>Total for GLOBAL BUDGET REVENUE</b>	<b>\$86,122.18</b>

#### **OTHER STATE GOVERNMENT GRANTS**

AUST SPORTS COMMISSION GRANT AASC	\$197.53
<b>Total for OTHER STATE GOVERNMENT GRANTS</b>	<b>\$197.53</b>

#### **GRANTS : COMMONWEALTH**

ABORIGINAL PROGRAM ASSIT SCHEME	\$5,500
ACTIVE AFTER SCHOOLS PROGRAM	\$7,050
<b>Total for GRANTS : COMMONWEALTH</b>	<b>\$12,550.00</b>

#### **PARENT CONTRIBUTION REVENUE**

ALICE SPRINGS 2015	\$2,657.94
STEXP - STUDENT PHOTOGRAPHS	\$329.00
M&S FEES MONEY RECD CENTRELINK	\$156.00

#### **OTHER OPERATING REVENUE**

DONATIONS - HEALTHY RECESS PROGRAM	\$500.00
FUNDRAISING JUMP ROPE FOR HEART	\$55.35
SCHOOL CARD CONTRA	\$7,464.90
TRAINING & DEVELOPMENT -COST EY	\$3,052.12
WS - INTEREST REVENUE	\$16,772.83
CRECHE CONTRIBUTION - FOOD COSTS	\$40,000.00
<b>Total for OTHER OPERATING REVENUE</b>	<b>\$66,845.20</b>

<b>Total Revenue</b>	<b>\$1,651,965.70</b>
----------------------	-----------------------

### Expenses

**SUPPLIES AND SERVICES**

ART - CONSUMABLES	\$188.54
MUSIC - RESOURCES	\$587.27
CLASS - CONSUMABLES - CPC	\$3,653.35
CLASS - CONSUMABLES - JP	\$2,951.37
CLASS - CONSUMABLES MID PRIM	\$833.24
CLASS - CONSUMABLES SEC	\$492.08
RES CENTRE - CONSUMABLES	\$198.81
RES CENTRE - RESOURCES	\$3,402.42
RES CENTRE - SUBSCRIPTIONS	\$385.73
HPE - CATERING - RECESS/TUCK SHOP	\$3,784.36
HPE - CATERING - BREAKFAST	\$465.40
HPE - VIT C & FISH OIL	\$712.05
EMERGENCY LUNCHES	\$2,732.37
HEALTH & PE - CONSUMABLES	\$964.03
ACTIVE AFTR SCHL CMMTIES EXPS	\$1,343.67
HEALTH & PHYSICAL ED - ATHLETICS	\$49.32
HEALTH & PHYSICAL ED - EXPENSES	\$163.65
HEALTH & PE - RESOURCES	\$804.34
MATHS - CONSUMABLES	\$538.54
MATHS - RESOURCES	\$169.96
QUICKSMART - SUBSCRIPTIONS	\$86.36
OPEN ACCESS EXPENSES	\$5,755
SCIENCE - CONSUMABLES	<b>-\$360.00</b>
COMPUTING - CONSUMABLES	\$1,572.20
COMPUTING - RESOURCES	\$1,875.21
COMPUTER UPGRADE PROGRAM	\$43,530.65
WEB & E-MAIL TRAFFIC	\$1,879.85
TECHNOLOGY- CONSUMABLES	\$789.96
TECHNOLOGY- RESOURCES	\$204.36
TECH STUDY - CONSUMABLES	\$177.60
TECH STUDY - RESOURCES	\$409.00
STEXP - STUDENT PHOTOGRAPHS	\$3,227.27
SRC - DISCOS	\$303.53
SPORT - SWIMMING CARNIVAL 2015	\$2,491.75
MANAGEMENT - CONSUMABLES	\$320.59
MANAGEMENT - PHOTOCOPYING	\$1,268.22
MANAGEMENT - RESOURCES	\$111.25
MANAGEMENT - OFFICE SUPPLIES	\$216.23
MANAGEMENT - SUBSCRIPTIONS	\$461.45



MANAGEMENT - GENERAL EXPENSES	\$54.55
PRINCIPAL - ACCOMMODATION	\$235.24
PRINCIPAL - CONSUMABLES	\$876.27
PRINCIPAL - RESOURCES	\$445.45
PRINCIPAL - GENERAL EXPENSES	\$130.70
LEADERSHIP CONFERENCES- T&D	-\$8,306.20
ACCOMMODATION NEW TEACHERS NEXT YR	\$163.64
STAFF - RESOURCES	\$72.50
STAFF - GENERAL EXPENSES	\$1,022.76
STAFF TRANSPORT NEW STAFF VISITS	\$1,212.05
COMM LIBRARY INTERNET COSTS	-\$15,150
FIRST AID - CONSUMABLES	\$852.50
FACIL - GENERAL CONSUMABLES	\$118.95
FACIL - GROUNDS CONSUMABLES	\$826.39
FACIL - POOL CONSUMABLES	\$2,097.00
POOL CHEMICALS	\$1,586.00
HIRE - RENT HOUSE 6671	\$5,400.00
FACIL-VEHICLES-FUEL & OIL	\$2,571.74
FACIL-MOWER MAINTENANCE	\$19.91
FACIL-TRAILER REGO& INSURANCE	\$2,124.21
FACIL- FORKLIFT R&M	\$3,397.58
FACIL - BOBCAT R&M	\$181.82
INFO SYSTEM - ADMIN COMPUTERS	\$10,000
PRINT - GENERAL CONSUMABLES	\$1,183.76
PRINT - INK	\$642.54
T & D - MEAL ALLOWANCE	\$140.00
T & D - CONSUMABLES	\$80.55
T & D -ACCOMODATION	\$3,160.62
T & D - GENERAL EXPENSES	\$294.55
QUICKSMART TRAINING	\$3,280.36
LIFEGAURD TRAINING	\$500.00
T & D - TRAVELLING EXPENSES	\$9,671.89
BUS EXPENSES INSURANCE/REGO	\$838.05
BUS EXPENSES - OTHER	\$300.00
BUS EXPENSES FUEL & OIL	\$5,167.27
WS - SCHOOL/COMMUNITY CATERING	\$499.95
WHOLE SCHOOL - CONSUMABLES	\$13,213.53
WS - DISCO'S	\$139.11
WS - FREIGHT INWARDS	\$8,508.30
WS - POSTAGE	\$289.14
WS-PHOTOCOPYING	\$4,050.19

WS - STATIONARY	\$676.85
WS - SUBSCRIPTIONS	\$1,209.41
WS - GENERAL	-\$79.00
WS - BUSINESS MANAGER FNO	\$2,585.48
<b>Total for SUPPLIES AND SERVICES</b>	<b>\$155,026.59</b>

#### **GLOBAL BUDGET EXPENSES**

GB-TELEPHONE CHARGES-RENTAL	\$648.59
GB-TELEPHONE CHARGES-LOCAL CALLS	\$2,281.45
GB-TELEPHONE CHARGES-STD CHARGES	\$832.14
GB-TELEPHONE CHARGES-MOBILE PHONES	\$470.68
GB-SAL/WAGES-TEACHERS	\$696,958.06
GB-SAL/WAGES-ANCILLARY	\$247,516.46
GB-SITE FUNDED WORKS	\$182,821.54
GB-ELECTRICITY EXPENSES	\$200,727.05
GB-RATES-WATER	\$947.46
GB-RATES-WATER USAGE	\$40,209.71
GB-CLEANING EXPENSES	\$66.62
GB-REPAIRS & MAINTENANCE	\$50,542.30
GB-MICROSOFT LICENCE RECHARGE	\$249.45
<b>Total for GLOBAL BUDGET EXPENSES</b>	<b>\$1,424,271.51</b>

#### **FACILITIES AND UTILITIES EXPENSES**

FACIL - POOL MAINTENANCE	\$466.63
FACILITIES - BUILDING IMPROVEMENTS	\$18,135.00
FACIL - BUILDING MAINTENANCE	\$33,534.30
FACIL - CLEAN EXPENSE SCHOOL	\$3,626.76
FACILITIES - GOV'T CAR LTH	\$15,301.60
FACILITIES - GOV'T CAR-FUEL & OIL	\$6,839.72
FACILITIES - GOV'T CAR R & M	\$2,120.00
FACIL - FUEL & OIL	\$951.77
FACIL - KEYS	\$466.37
FACIL - GAS BOTTLE RENTALS	\$38.18
STAFF HOUSING WATER USAGE	\$1,118.40
<b>Total for FACILITIES AND UTILITIES EXPENSES</b>	<b>\$82,598.73</b>

#### **EMPLOYEE EXPENSES**

STAFF - SALARY TEACHERS	\$666.63
STAFF - SALARY SSO'S	\$408.29
STAFF - SALARIES CLEANING	\$889.51
SALARIES ACTIVE AFTER SCHL CMMTIES	\$15,060.00
STAFF - SALARIES - CONTRACTORS	\$48,912.68
STAFF - PAYE TAX	-1293.39
STAFF - SUPERANNUATION	853.52

PRESCHOOL - T & D	\$50.00
<b>Total for EMPLOYEE EXPENSES</b>	<b>65,547.24</b>
<b>OTHER OPERATING EXPENSES</b>	
WS - DOUBTFUL DEBTS CUSTOMERS	\$4,594.88
<b>Total for OTHER OPERATING EXPENSES</b>	<b>\$4,594.88</b>
<b>PARENT CONTRIBUTION EXPENSES</b>	
PRIMARY CANBERRA CAMP 2014	-\$3,360
ALICE SPRINGS CAMP 2015 BEHAV & ATT	\$7,647.67
PORT AUGUSTA CLICKET CARNIVAL 2015	\$1,947.79
MP CAMP ADELAIDE 2015	\$8,306.84
JP/CPC XMAS PAGEANT 2016	\$70.91
STUDENT - JETSETTER	\$500.00
<b>Total for PARENT CONTRIBUTION EXPENSES</b>	<b>\$15,113.21</b>
<b>DEPRECIATION AND AMORTISATION</b>	
FACIL - DEPREC VEHICLES GENERAL	\$5,328.40
FACIL - DEPREC VEHICLES TRACTOR	\$7,128.79
PRINT - DEPREC EQUIPMENT	\$776.00
<b>Total for DEPRECIATION AND AMORTISATION</b>	<b>\$13,233.19</b>
<b>Total Expenses</b>	<b>\$1,760,385.35</b>
<b>Surplus or (Deficit) funds</b>	<b>\$108,419.65</b>